

WORKSHOP CRACOW

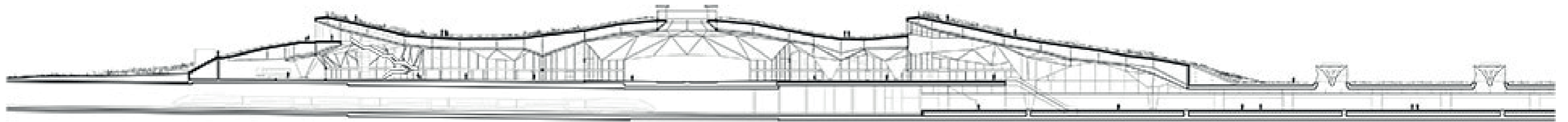
GROUP 3:

Lisa Mazzi

Mar Ribera

Dmytro Dembrivskyi

Witold Budzynski



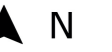
INTERMODAL STATION

- The building arose from the initial idea of tackling the new high-speed railway station and the bus station in a single formal gesture.
- The faceted imprint of the interior goes with that of the landscaped rooftop park
- By burying the tracks underground, areas cut off from one another can be reconnected.
- The station's roof gives its geometrical and topographical imprint to a large new central public park.



HIGH LINE PARK (NEW YORK)

- Is build on an elevated rail structure
- The High Line neighbourhood wanted to preserve what was essentially a defunct piece of urban infrastructure
- As a result, there is now an urban public space that colours Manhattan's skyline green, but without silencing the rumble of traffic below



STRENGTH
- Good connection to the city centre
- green
- good mixité in the surrounding area
- close to city centre

WEAKNESSES
- Isolated from the city buy tram/train line and street
- fragmented urban areas
- noise
- not typical composition
- too much communication areas

OPPORTUNITIES
- Universities
- Possible to create extension of the city centre
- paths
- cyclepath system
- residential area
- parking

THREATS
- make changes to the trucklines can be a problem for public transport system
- if we make good quality spaces without attracting people they might be empty
- pedestrian safety

**MAIN IDEAS:
CONCEPT**

RESIDENTIAL USE

Creation of single-family housing buildings and student residences due to their proximity to the university

SPORT EQUIPMENT

CULTURAL EQUIPMENT: CIRCLE OF FINES ARTS
Building where music, interpretation, dance and painting classes are taught

SOCIAL EQUIPMENT HUB for the neighborhood: workshops, meeting rooms, leisure areas and urban orchard plots

PLATFORM

Views from the city and some cafeterias-bookstore

10 MIN TO CITY CENTRE

■ ■ ■ Pedestrians&bikes path (+ 7 m.)

0 10 25 50 75 100m

